

530000N

529900N

529800N

529700N

298300E

298400E

298500E

298600E

298200E

530000N

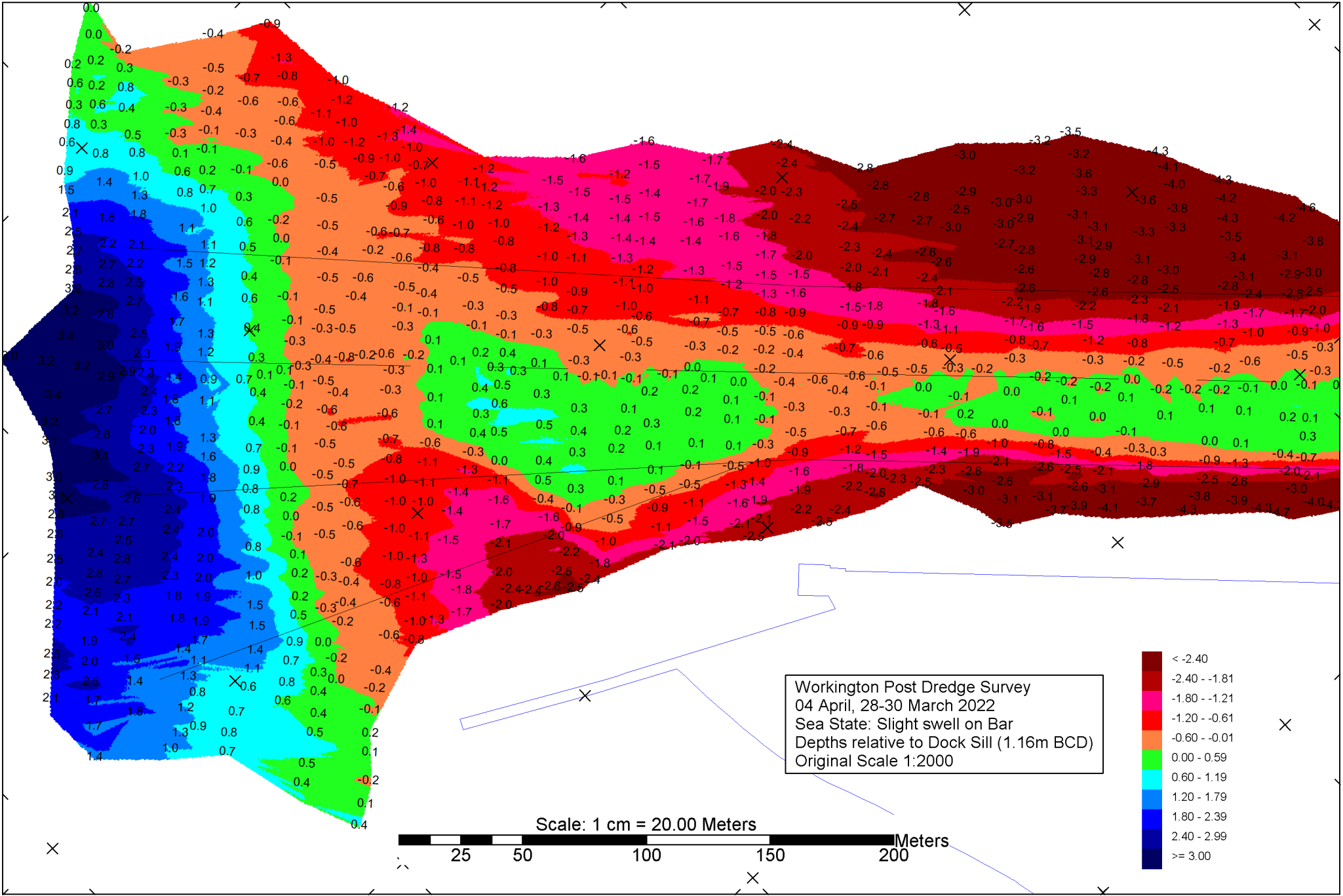
298100E

529900N

298000E

529800N

298000E



Workington Post Dredge Survey
 04 April, 28-30 March 2022
 Sea State: Slight swell on Bar
 Depths relative to Dock Sill (1.16m BCD)
 Original Scale 1:2000

